



UNIVERSITY OF OTTAWA
HEART INSTITUTE
INSTITUT DE CARDIOLOGIE
DE L'UNIVERSITÉ D'OTTAWA



**YOUR HEART  YOUR INSTITUTE
OUR FUTURE TOGETHER**

STRATEGIC PLAN 2025-2030

MESSAGE FROM THE PRESIDENT AND CEO, AND BOARD CHAIR

For nearly five decades, the Ottawa Heart Institute has set the standard for excellence in cardiac care by driving innovation, delivering transformative treatments, and leading the fight against cardiovascular disease. We are proud of our record of achievement. From our first heart transplant to our breakthrough approaches to women's heart health and rare diseases, from transformative regional care for heart attacks to less invasive procedures and surgery, and from dramatic advances in imaging, to clinical trials and mobile clinics, we keep climbing higher. Through it all, we have never lost sight of our "why". We are here to give our patients the very best care.

Today, we confront a critical reality: cardiovascular disease remains the world's leading cause of death and Canada's leading cause of death for women. The challenge is immense, but so is our resolve. In this pivotal moment, we see not just a chance to refine and expand our capabilities, but also the responsibility to lay the foundation for the decades to come. Our 2025–2030 strategic plan represents more than a roadmap – it is a declaration of our steadfast dedication to pushing boundaries, embracing collaboration, and harnessing the power of cutting-edge technology and AI to address the evolving needs of patients, while never losing the human touch. It is a reaffirmation of our values and a bold vision for what is to come.



Rob Beanlands, MD, FRCPC
President and CEO



Dalton McGuinty
Chair of the Board



The next five years will be pivotal, not just for us but for the future of heart health. We will tap into our globally recognized community of heart health experts, pioneer new discoveries, foster a stronger healthcare network, and inspire hope beyond our walls. We will co-design solutions with patients and partners, ensure broader and more equitable access to care in our community, and accelerate alliances to support awareness, education, and prevention initiatives.

Yet, none of this would be possible without the people who bring our purpose to life. From our nurses, technologists, allied healthcare providers and support staff, to our trainees, physicians, scientists and researchers, our pledge is to keep working together to provide unwavering world-class care at the forefront of discovery and innovation. Our team's tireless commitment ensures that patients receive not only the best treatments but also the compassion and empathy that truly define the very best care.

We are also deeply grateful to our community of patients, families, donors, board members, and partners – including Ontario Health, The Ottawa Hospital, University of Ottawa, regional hospitals, primary care providers, academic centres in Canada and worldwide, and the many other organizations and partners who inspire and empower our work every step of the way.

The Ottawa Heart Institute has always been a leader. As we enter this critical phase, we reaffirm our dedication to our patients and to shaping the future of cardiac care – not just locally or nationally, but globally.

“ The time is now. We are ready to answer the call and lead the charge towards heart health for all. There's no room for hesitation—this is your institute, your heart, and our future together.





OUR PURPOSE

To be your world-leading heart
institute driving the transformation
of heart health and cardiac care



YOUR VOICE. OUR FUTURE TOGETHER.

Our strategic plan was built with the voices, insights, and experiences of the people who matter most—patients, families, staff, and community partners.

1429

Survey
responses

12

Focus group
sessions

337

Clinical partners
engaged

2300

Total
touchpoints



OUR STRATEGIC DIRECTIONS



Your heart is in the right place

Save lives and improve quality of life through world-leading, people-centred interventions, specialty care, and training future heart health leaders.



Care in the heart of your community

Reach beyond our walls to enable screening, testing, care, guidance and education close to home.



The heart of innovation and discovery

Lead transformative cardiac research that advances medical breakthroughs and improves the health of Canadians and people worldwide.



GUIDING PRINCIPLES

Our guiding principles are the foundation upon which trust is built, excellence is achieved, and meaningful progress is made.



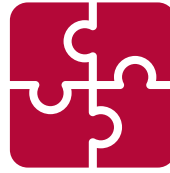
People first

Deliver patient-centred care. Equip our teams with the tools, support, and environment they need to bring their best to you every day. Collaborate with patients to co-design heart health solutions, ensuring they have the knowledge and resources to make informed decisions about their care.



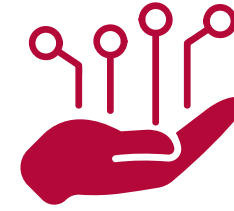
Heart health for all

Ensure our care, research, and education support the diverse communities we serve, including Indigenous, underserved, and high-risk populations. Drive solutions that reduce our climate impact while tackling its effects on heart health. Champion social accountability, foster inclusion, and build a space where everyone feels they belong.



Collaboration for excellence

Leverage transdisciplinary Heart Teams and partnerships to drive quality, safety, innovation and collaboration – setting the standards nationally and globally. Expand our role in education, shaping world-class health professionals.



Leverage data, AI and technology with a human touch

Strengthen our capacity through data intelligence, clinical trials, and AI-driven innovation to enhance care, streamline workflows, and drive better outcomes—all while preserving the human-touch, empathy, and compassion, within our people-first culture.





Your **heart** is in the right place

When people turn to the Ottawa Heart Institute, they know they are in the best hands. With unmatched expertise, cutting-edge treatments, and a relentless focus on people-centred care, the Institute consistently sets the standard for excellence. Now we're climbing to new heights. We will recruit, educate, and train cardiac leaders. We will push the boundaries of possibility with new technology and drive specialty-care forward. We will raise the bar, lower mortality rates, improve quality of life, and define the path that will lead others into the future of cardiac care.



OBJECTIVES

Optimize care at the Heart Institute

Harness cutting-edge research, innovation, technology, and data alongside infrastructure, patient experiences, and partnerships to drive clinical excellence, agility, and quality across the continuum of care.

Empower the patient experience

Co-design educational resources that provide patients with timely, essential information for shared decision-making. Partner with patients to enhance and streamline their care experience and health journey.

Support our teams to be their best

Recruit and retain top talent by fostering a workplace where teams can focus on care, education, and research while prioritizing their own heart health. Cultivate an inclusive, connected Heart Institute community where individuals belong, learn, thrive, and grow. Strengthen Heart Teams and partnerships to drive creative solutions and elevate cardiac care.

Become the premier destination for cardiac learning

Advance the Heart Institute as the top training ground for future cardiac care leaders, providing world-class learning experiences and opportunities.





Care in the **heart** of your community

Healthcare systems nationwide face mounting pressure from aging populations, environmental challenges, workforce strain, and the burden of disease. As access gaps widen, we are determined to forge powerful alliances with primary care providers, Ontario Health and other organizations to expand life-saving cardiac care beyond our walls. Through co-developed education material, prevention initiatives, and innovative care models, we will empower communities to adopt healthier lifestyles and reduce cardiac risk. By strengthening screening, testing, treatment, and follow-up capabilities, we will detect disease early and intervene decisively. Together, we will construct a more unified, agile healthcare network – one that ensures equitable, high-impact cardiac care reaches those who need it most.



OBJECTIVES

Expand education and cardiac care capacity

Strengthen our role in training and capacity building to enhance cardiac care expertise for providers across communities.

Maximize care in community and streamline Institute access

Partner with providers outside the Institute to expand cardiac care through virtual clinics, training, remote monitoring, data sharing, mobile screening, and hub-spoke-and-node models. Develop care models that enable the right care, at the right time, for the right patient.

Lead in heart health information and collaboration

Establish the Heart Institute as the preeminent trusted resource for heart health in Canada and globally, delivering authoritative information, guidance, and tools. Partner with Indigenous and other communities to co-design cardiac care models, develop education tools, and equip ambassadors to promote heart health and improve outcomes.





The **heart** of innovation and discovery

MESSAGE FROM THE CHIEF SCIENTIFIC OFFICER AND VICE PRESIDENT, RESEARCH AND BOARD CHAIR

At the Ottawa Heart Institute, every treatment, every test, every procedure, started with a research question: what can we do to improve the heart health of our community?

We learn more every day about the enormous complexity of heart health. It's intricately intertwined with other body systems and organs, like our immune system and brain, and it arises through interactions with our physical and social worlds. Research at the heart of your care means we must understand and address the true reasons people are getting sick. From rare diseases to understudied populations, we'll push the boundaries of innovation from first-in-human studies to heart health strategies in a changing climate. By asking new kinds of research questions, we'll identify who's at risk earlier than ever and provide the roadmap needed to get and stay healthy.



Katey Rayner, PhD

Chief Scientific Officer and
Vice President, Research



Keira Torkko

Chair of the Ottawa Heart Institute
Research Corporation
Board of Directors

Research requires teamwork. It requires shared vision to redefine heart health and how we achieve it. We will bring clinicians into the lab, researchers into the clinic, and patients to every table. Novel transdisciplinary teams will integrate our world-class clinical trials leadership and data infrastructure to revolutionize the kinds of research questions we can ask, the solutions we can propose, and the robust methods we can use to evaluate our novel care strategies.

With our people-first approach, we will attract the world's brightest and most creative scientists to well-supported groundbreaking teams. Research at the heart of your care ensures that every innovation, every discovery, and every breakthrough is driven by those we serve. Working hand-in-hand with patients and care providers, we will ensure the human touch remains at the heart of everything we do.

“ Through our powerful researcher-clinician-community partnerships, we will rapidly turn heart health problems into world-class research into health solutions. Together we’ll implement, adapt and scale-up to live healthier and save resources.



A photograph of two researchers in a laboratory setting. They are wearing blue lab coats, safety glasses, and blue gloves. One researcher is using a white pipette to transfer liquid into a small vial held by the other. The background shows various lab equipment, including a centrifuge, racks of pipettes, and storage containers. A poster with microscopic images is visible on the wall.

OUR RESEARCH PURPOSE

Lead transformative cardiac research
that improves the health of Canadians
and people worldwide



RESEARCH STRATEGIES



Establish the Heart Institute as a **global leader** in cardiac research



Harness data to transform cardiac care



Turn **research into action** for better cardiac care

OUR RESEARCH PRIORITIES

Three research objectives to achieve meaningful impact on cardiac health



Reduce cardiac disease risk and progression across the lifespan

Identify risk at its earliest stages and intervene to stop heart disease before it starts.

Centre on our patients' top priority to stay healthy by living well longer.



Improve care and outcomes for cardiac diseases and unique populations

Develop a deeper understanding of the full spectrum of cardiac diseases by using our rich clinical and research resources and identify points of intervention. Work to reduce the unequal burden of cardiac disease and poor outcomes in unique and under-served populations across our community.



Put the heart at the centre of whole-person health

Uncover how cardiac systems interact within our body, and our physical and social environments. Design interventions that address the way these intersecting health challenges affect each of us.





Establish the Heart Institute as a **global leader** in cardiac research

Foster a research-driven culture where care, education, and discovery seamlessly intersect. Attract and retain top talent and cultivate rich partnerships to enhance our international impact. Equip our teams with the tools, skills and agility needed to be part of complex collaborations that advance heart health.

Strengthen our world-class training programs in clinical, research, and data science. Draw on evidence-based best practices to equip the next generation to solve the biggest challenges in cardiac care.

Empower every patient and staff member to contribute to and benefit from research. Build an engagement hub to integrate the voices of patients, caregivers and families at every stage.





Harness data to transform cardiac care

Grow our state-of-the-art Data Science Centre to lead national and international efforts to use rich data resources to solve heart health challenges. Build robust data and AI platforms and strategies to capture and use data. Develop cutting-edge AI and analytics tools and infrastructure that establish new ways to integrate, learn from and re-use data.

Through trailblazing patient partnerships, undertake conversations about data consent and use that lead to near-universal patient engagement in research.

Design innovative clinical trials and methods to accelerate the creation and implementation of new care models. Integrate research and care to ensure all patients receive the most effective and cutting-edge cardiac health interventions.





Turn **research into action** for better cardiac care

Establish the Ottawa Heart Institute as *the* trusted source of the highest-quality information on cardiovascular health and wellness. Build relationships with patients and policymakers that move our discoveries from lab to living room.

Help our researchers and clinicians build effective translational teams and partnerships, and turn their findings into prevention, diagnostic and treatment strategies. Grow our capacity to share our research insights and innovations, and support implementing, adapting and scaling them up into practice and policy across the region and around the world.



HALLMARK INITIATIVES



Launch **One million
Canadian hearts**
initiative

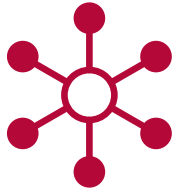


Build the **OHI Heart
Health Education
Centre**

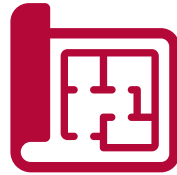


Establish **tele-cardiac
critical care**

HALLMARK INITIATIVES



Enable cardiac care closer to home through enhanced collaboration with primary care, Ontario Health and others, while we expand our hub-spoke-and-node models



Develop master plan to **reshape our infrastructure to drive innovative care**



Revolutionize our use of data and enable AI solutions that drive efficiency, effectiveness and outcomes



HALLMARK INITIATIVES



Enhance the **cardiac clinical trials** hub to elevate research and patient engagement



Elevate our **Canadian Women's Heart Health Centre** to achieve global impact



Develop a **national centre of excellence** around cardiovascular disease prevention, cardiac rehabilitation, and heart-related climate research

