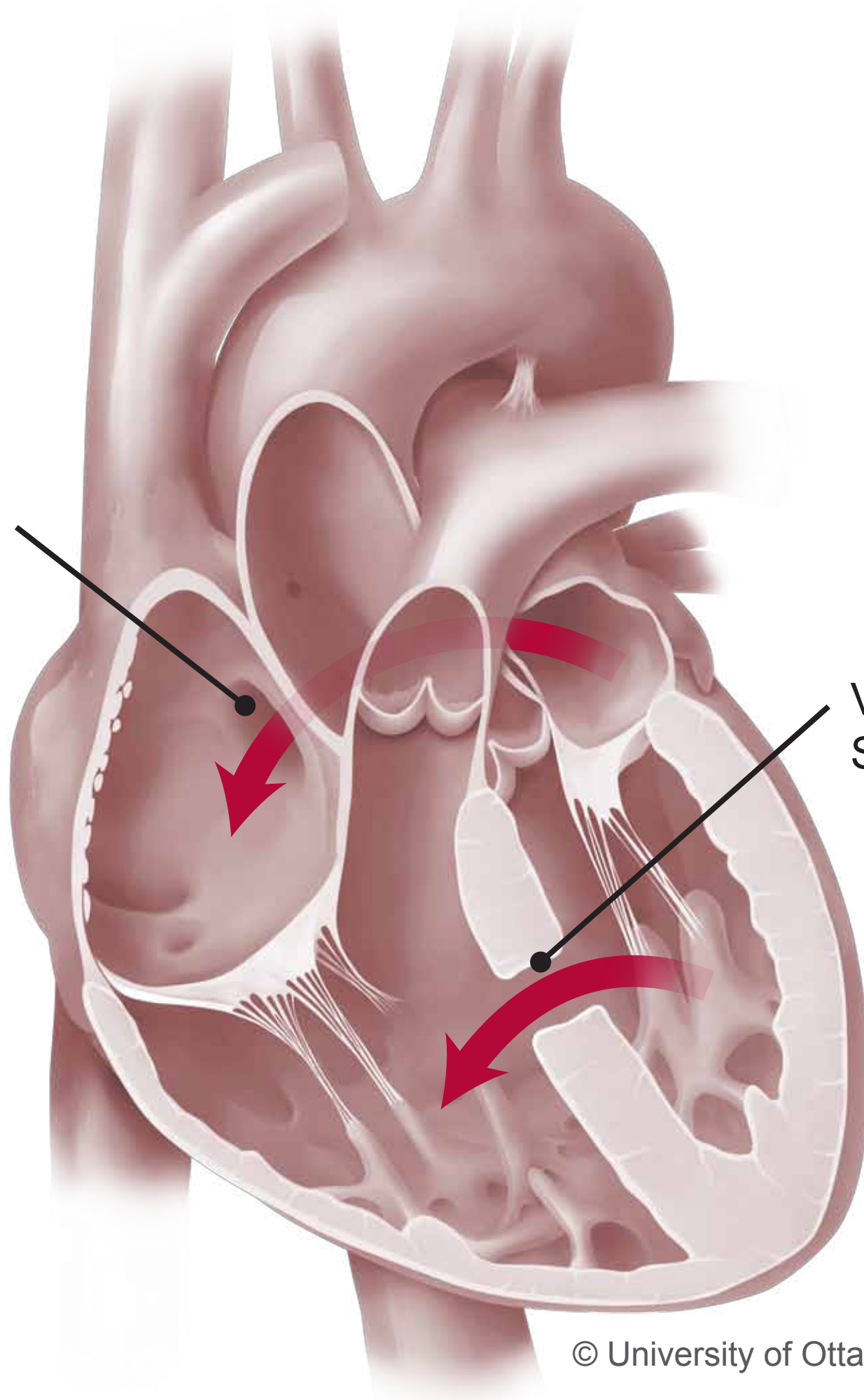




UNIVERSITY OF OTTAWA
HEART INSTITUTE

INSTITUT DE CARDIOLOGIE
DE L'UNIVERSITÉ D'OTTAWA

Atrial
Septal
Defect



Ventricular
Septal Defect

© University of Ottawa Heart Institute

Septal defects ("holes in the heart") are the most common form of congenital heart disease. These defects can allow improper blood flow between the right and left atria or the right and left ventricles, causing the heart to work harder than normal.